

# 深圳市康华尔电子有限公司

TEL:0755-27838351 QQ:632862232 <http://www.konuaer.com>

调频接收机用 LT10.7M□ 系列陶瓷滤波器  
LT10.7M□ Series of Ceramic Filter For FM Receiver

10.7MHz

## 技术特性 TECHNICAL CHARACTERISTICS

型号 Part Number	3分贝带宽 3dB Band Width (kHz)	20分贝带宽 20dB Band Width (kHz) max	插入损耗 Insertion Loss (dB) max	阻带衰减 Spurious Attenuation (9-12MHz)(dB)min
LT10.7MA5	280±50	650	6	30
LT10.7MS2	230±50	600	6	40
LT10.7MS3	180±40	520	7	40

输入/输出阻抗: 330Ω  
Input/Output Impedance: 330Ω

低损耗 LT10.7M□A10 系列陶瓷滤波器  
LT10.7M□A10 Series of Ceramic Filter(Low-Loss Type)

10.7MHz

## 技术特性 TECHNICAL CHARACTERISTICS

型号 Part Number	3分贝带宽 3dB Band Width (kHz)	20分贝带宽 20dB Band Width (kHz) max	插入损耗 Insertion Loss (dB)	阻带衰减 Spurious Attenuation (9-12MHz)(dB)min
LT10.7MA5A10	280±50	590	2.5±2.0	30
LT10.7MS2A10	230±50	520	3.0±2.0	35
LT10.7MS3A10	180±40	470	3.5±1.5	35
LT10.7MJA10	150±40	360	4.5±2.0	35

输入/输出阻抗: 330Ω  
Input/Output Impedance: 330Ω

宽窄带型 LT10.7M□ 系列陶瓷滤波器  
Wide/Narrow Band-width LT10.7M□ Series of Ceramic Filter

10.7MHz

## 技术特性 TECHNICAL CHARACTERISTICS

型号 Part Number	3分贝带宽 3dB Band Width (kHz)	20分贝带宽 20dB Band Width (kHz) max	插入损耗 Insertion Loss (dB)	阻带衰减 Spurious Attenuation (9-12MHz)(dB)min
LT10.7MA21	400min	950	3.0±2.0	20
LT10.7MA19	±175min	950	3.0±2.0	20
LT10.7MA20	330±50	680	4.0±2.0	30
LT10.7MHY	110±30	350	5.5±2.0	30
LT10.7MFP	20min	95	6.0max	24(10.7±1.0MHz)

输入/输出阻抗: 470Ω (A19), 330Ω (A21, A20, HY), 600Ω (FP)  
Input/Output Impedance: 470Ω (A19), 330Ω (A21, A20, HY), 600Ω (FP)

# 深圳市康华尔电子有限公司

TEL:0755-27838351 QQ:632862232 <http://www.konuaer.com>

低背型 LT10.7M□L 系列陶瓷滤波器  
LT10.7M□L Series of Ceramic Filter(Low-Profile Type)

10.7MHz

## 技术特性 TECHNICAL CHARACTERISTICS

型号 Part Number	3分贝带宽 3dB Band Width (kHz)	20分贝带宽 20dB Band Width (kHz) max	插入损耗 Insertion Loss (dB) max	阻带衰减 Spurious Attenuation (9-12MHz) (dB)min
LT10.7MA5L	280 ± 50	650	6.0	30
LT10.7MS2L	230 ± 50	600	6.0	40
LT10.7MS3L	180 ± 40	520	7.0	40
LT10.7MJL	150 ± 40	400	10.0	40

输入/输出阻抗: 330Ω  
Input/Output Impedance: 330Ω

低损耗、低背型 LT10.7M□LA10 系列陶瓷滤波器  
LT10.7M□LA10 Series of Ceramic Filter(Low-Loss/Low-profile Type)

10.7MHz

## 技术特性 TECHNICAL CHARACTERISTICS

型号 Part Number	3分贝带宽 3dB Band Width (kHz)	20分贝带宽 20dB Band Width (kHz) max	插入损耗 Insertion Loss (dB)	阻带衰减 Spurious Attenuation (9-12MHz) (dB)min
LT10.7MA5LA10	280 ± 50	590	2.5 ± 2.0	30
LT10.7MS2LA10	230 ± 50	520	3.0 ± 2.0	35
LT10.7MS3LA10	180 ± 40	470	3.5 ± 1.5	35
LT10.7MJLA10	150 ± 40	360	5.5 ± 2.0	35

输入/输出阻抗: 330Ω  
Input/Output Impedance: 330Ω

窄带、低背型 LT10.7M□L 系列陶瓷滤波器  
Wide/Narrow Band-width LT10.7M□L Series of Ceramic Filter(Low-profile Type)

10.7MHz

## 技术特性 TECHNICAL CHARACTERISTICS

型号 Part Number	3分贝带宽 3dB Band Width (kHz)	20分贝带宽 20dB Band Width (kHz) max	插入损耗 Insertion Loss (dB) max	阻带衰减 Spurious Attenuation (9-12MHz) (dB)min
LT10.7MA20L	330 ± 50	680	6.0	30
LT10.7MHYL	110 ± 30	350	10.0	30

输入/输出阻抗: 330Ω  
Input/Output Impedance: 330Ω

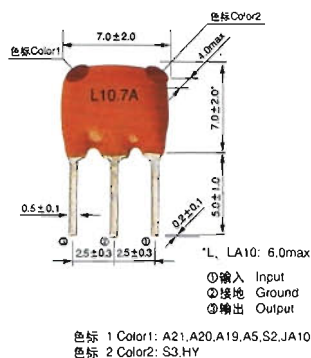
# 深圳市康华尔电子有限公司

TEL:0755-27838351 QQ:632862232 http://www.konuaer.com

## 10.7M 陶瓷滤波器 10.7M Series of Ceramic Filter

10.7MHz

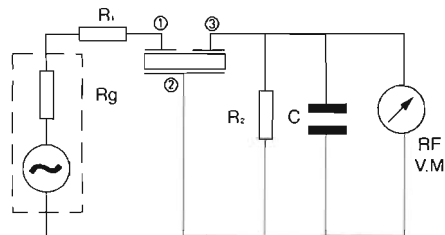
### 外形与尺寸 FIGURE AND DIMENSIONS



### 规格 STANDARD RULE

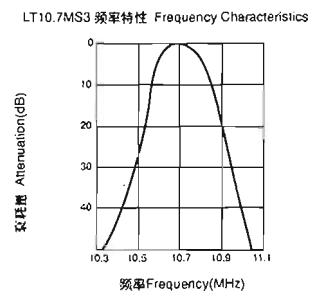
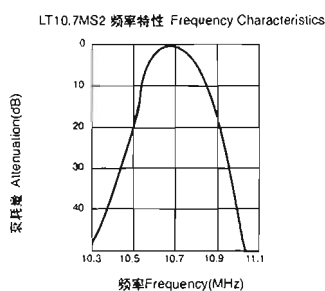
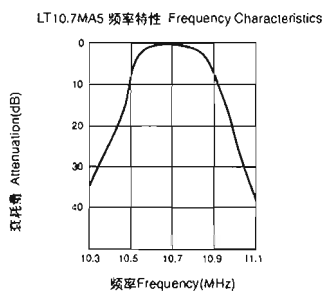
中心频率 CENTER FREQUENCY	色标 Color
D:10.640MHz ± 30KHz	黑 Black
B:10.670MHz ± 30KHz	蓝 Blue
A:10.700MHz ± 30KHz	红 Red
C:10.730MHz ± 30KHz	橙 Orange
E:10.760MHz ± 30KHz	白 White

### 测试电路 TEST CIRCUIT



$R_1 = R_2 = 330\Omega$   $C = 10PF$   
(包括寄生电容和射频电压表的输入电容)  
(Including stray capacitance and input capacitance of RF voltmeter)

### 特性曲线 CHARACTERISTICS

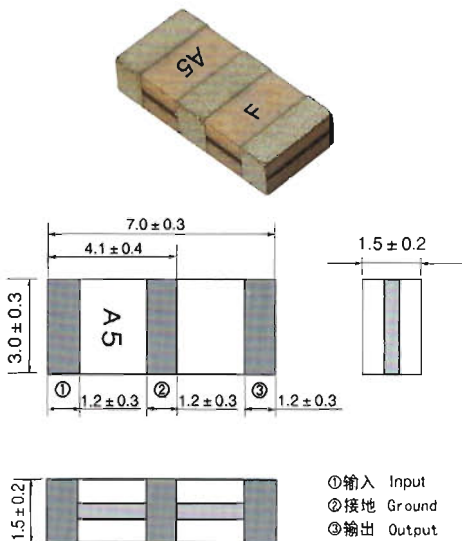


## 片式 LTCA/CV10.7M 系列陶瓷滤波器 Chip Type LTCA/CV10.7M Series of Ceramic Filter

10.7MHz

### 技术特性 TECHNICAL CHARACTERISTICS

### 外形与尺寸 FIGURE AND DIMENSIONS



型号 Part Number	3分贝带宽 3dB Band Width (KHz)	20分贝带宽 20dB Band Width (KHz)max	插入损耗 Insertion Loss (dB)	阻带衰减 Spurious Attenuation (9-12MHz)(dB)min
LTCA10.7MJ	150 ± 40	430	≤ 10.0	30
LTCV10.7MJ	150 ± 40	380	5.5 ± 2.0	35
LTCA10.7MS3	180 ± 40	520	≤ 6.0	30
LTCV10.7MS3	180 ± 40	470	4.0 ± 2.0	35
LTCA10.7MS2	230 ± 50	570	≤ 6.0	30
LTCV10.7MS2	230 ± 50	510	3.5 ± 2.0	35
LTCA10.7MA5	280 ± 50	650	≤ 6.0	30
LTCV10.7MA5	280 ± 50	590	3.0 ± 2.0	35
LTCV10.7MA20	330 ± 50	700	3.0 ± 2.0	30
LTCV10.7MA19	$f_0 \pm 175\text{min}$	950	3.0 ± 2.0	20 (5-15MHz)

输入/输出阻抗: 330Ω, 470Ω (A19) Input/Output Impedance: 330Ω, 470Ω (A19)

# 深圳市康华尔电子有限公司

TEL:0755-27838351

QQ:632862232

www.konuaer.com

## 型号命名 PART NUMBERING

### 高频滤波器MHz Ceramic Filter

LT CA 10.7M A5 A10 U A00 - B0

① ② ③ ④ ⑤ ⑥ ⑦ ⑧

- ①产品类别product type
- ②结构、尺寸structure & size  
T: 三单元DIP型 three units DIP  
S: 低背型DIP型low-profile DIP  
C、CA、CV、CS、CE: SMD型SMD type  
普通DIP型common DIP type: 省略abbreviation
- ③标称中心频率nominal center frequency  
单位为MHz (二到四位数字加M表示) 2 to 4 digit numerals plus M, the unit is MHz
- ④类型  
带宽band width
- ⑤特性  
L: 低背型low-profile type  
A10: 低损耗型low-loss type  
LA10: 低背、低损耗型low-profile/low-loss type
- ⑥中心频率允许偏差center frequency tolerance  
U:  $\pm 30$  kHz; H:  $\pm 25$  kHz; K:  $\pm 20$  kHz; V:  $\pm 15$  kHz; J:  $\pm 10$  kHz
- ⑦特殊规格individual specification
- ⑧包装packaging

### 高频鉴频器MHz Ceramic Discriminator

JT CV 10.7M G 001 A U A00 - B0

① ② ③ ④ ⑤ ⑥ ⑦ ⑧ ⑨

- ①产品类别product type
- ②结构structure  
CV: SMD型  
DIP: 省略abbreviation
- ③标称中心频率nominal center frequency  
单位为MHz (二到四位数字加M表示) 2 to 4 digit numerals plus M, the unit is MHz
- ④类型type
- ⑤序列号serial No  
与IC型号有关 (一到三位数字表示) related with IC, 1 to 3 digit numerals
- ⑥振动模式oscillating mode  
A: 厚度伸缩模式thickness expander mode  
S: 厚度剪切模式thickness shear mode
- ⑦中心频率允许偏差center frequency tolerance  
U:  $\pm 30$  kHz; H:  $\pm 25$  kHz; K:  $\pm 20$  kHz
- ⑧特殊规格individual specification
- ⑨包装packaging

### 高频陷波器MHz Ceramic Trap

XT C 10.7M T E B00 - B0

① ② ③ ④ ⑤ ⑥ ⑦

- ①产品类别product type
- ②结构structure  
C: SMD型SMD type  
DIP: 省略abbreviation
- ③标称中心频率nominal center frequency  
二到四位数字加M表示2 to 4 digit numerals plus M
- ④类型type  
A, J: 单吸收, 二端single trap, two terminals  
B, C: 单吸收, 三端single trap, three terminals  
W: 双吸收, 三端double traps, three terminals  
T: 三吸收, 三端triple traps, three terminals
- ⑤电感inductance  
E:  $5.6 \mu\text{H}$ ; G:  $8.2 \mu\text{H}$ ; L:  $15 \mu\text{H}$
- ⑥特殊规格individual specification
- ⑦包装packaging